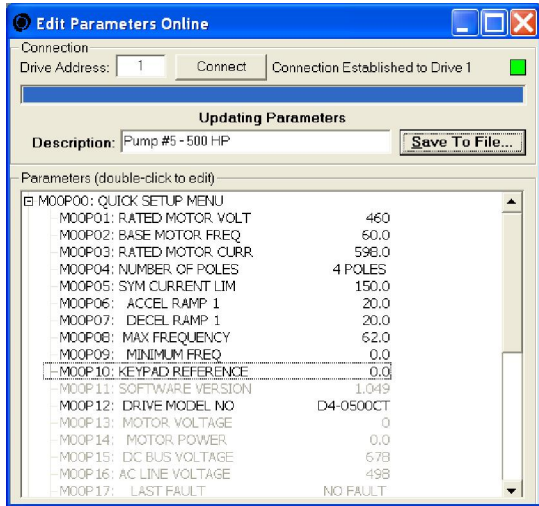


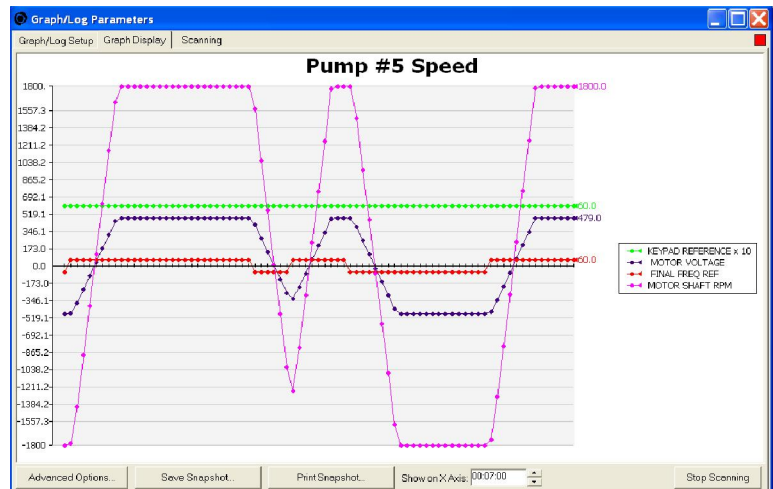
DRIVEMASTER DRIVE CONFIGURATION SOFTWARE

Drivemaster is a Windows based program designed to make drive set-up, record keeping and trouble-shooting easy. Drive parameters can be extracted from a drive, reviewed, modified, printed, stored on disk, reloaded back into the same drive or copied to another drive. Data Logging and Graphing of drive parameters is also possible. Offline and Online Editing is supported.

Drivemaster supports Modbus Serial Communications and Ethernet / Modbus TCP Communications.



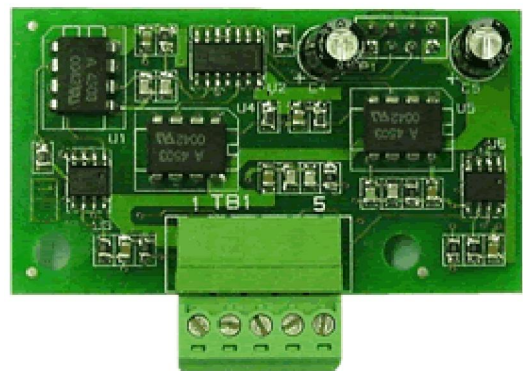
Edit and Save Drive Parameters



Log and Graph Drive Parameters

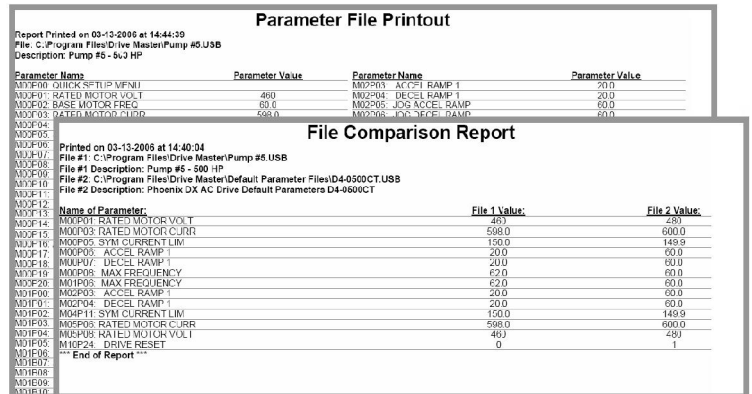
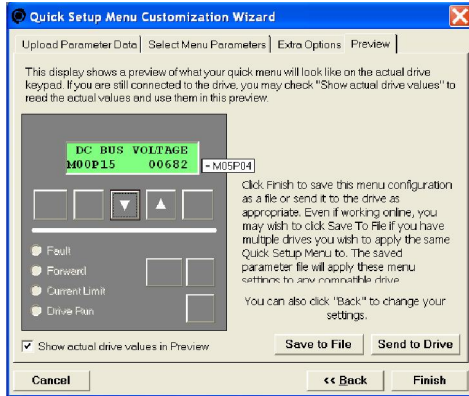


Ethernet Communications Cable



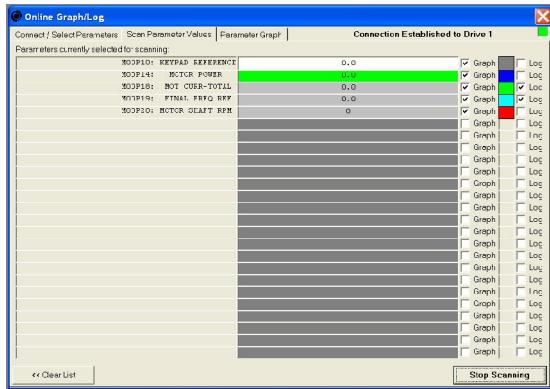
Serial Communications Card

With Drivemaster you can also.....



Compare Files and Print Drive Set-up

Customize the Drive Keypad Display



Date	Time	M00P14	M00P15	M00P16	M00P18	M00P19	M00P20
*** Log Opened: 13:38:20 01-27-2006							
01-27-2006	13:38:52	0.5	635	457	6.5	60.0	1800
01-27-2006	13:39:26	0.5	632	457	6.5	60.0	1800
01-27-2006	13:40:00	0.6	633	457	6.5	-60.0	-1800
01-27-2006	13:40:34	0.6	633	457	6.5	-60.0	-1800
01-27-2006	13:41:08	0.6	632	457	6.4	-60.0	-1800
01-27-2006	13:41:41	0.3	631	457	9.7	60.0	837
01-27-2006	13:42:15	0.5	634	457	6.5	60.0	1800
01-27-2006	13:42:49	0.5	631	457	6.4	60.0	1800
01-27-2006	13:43:22	0.6	633	457	7.7	-60.0	-804
01-27-2006	13:43:56	0.5	628	456	6.4	-60.0	-1800
*** Log Closed: 13:44:27 01-27-2006							
*** Log Opened: 13:29:18 02-02-2006							

Scan and Log Drive Parameters

Features:

- Use with Phoenix DS (Open Loop) or Phoenix ES (Closed Loop) AC Vector Drives.
- View and modify drive parameters from a simple to use computer interface.
- Connect via Serial Communication (RS-232/422/485) or Ethernet Communication.
- Supports both On-Line and Off-Line editing of all drive parameters.
- Select up to 25 specific drive parameters for Logging, Graphing, Display and On-Line Editing.
- Retrieve all drive parameters from a new or existing US Drives, Inc. product.
- Save all retrieved drive parameters to your computer's hard disc or other media.
- Load drive parameter files stored on your computer to a new or existing US Drives, Inc. product.
- Data Logging feature periodically scans and stores up to 25 different drive parameters.
 - Scan period is adjustable (Hr, Min, Sec) for high speed or long term applications.
 - Data files are easily imported to Microsoft Excel for future Printing, Graphing and Analyzing.
- Graphing feature allows you to create real time plots of up to 25 different drive parameters.
- Easily configure drives of different horsepower ratings with the same operating sequence.
- Compare a drive's parameter set against that drive's default parameter set.
- Compare a drive's parameter set to a previously saved set of drive parameters.
- Print out a list of all drive parameters and save a paper copy for your records.
- Print out a list of parameter differences between two drives or two saved file sets.
- Easily scale and format the drive's Keypad to display parameters in real world units (GPM, PSI, etc.).
- Easily modify the drive's Keypad to show parameters of specific interest in your application.